



The Beeches, Park Street, St. Albans,  
Hertfordshire, AL2

TA  
UK®

# Key Features

---

- Retirement Apartment
- Open Plan Kitchen/Living Room
- Large Double Bedroom
- First (Top) Floor
- Communal Gardens
- Communal Parking
- New Long Lease
- Close to the River Ver
- Attractive Surroundings



*Spacious first-floor over-55s apartment at The Beeches, Park Street. Peaceful, low-maintenance living close to the River Ver, local shops, bus routes and rail links to St Albans and Watford.*





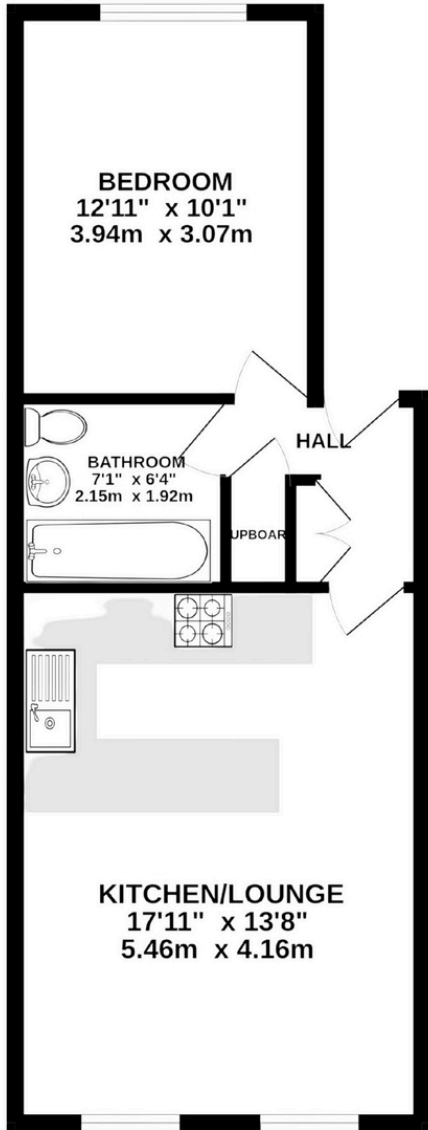
Spacious first-floor over-55s apartment at The Beeches, Park Street. Peaceful, low-maintenance living close to the River Ver, local shops, bus routes and rail links to St Albans and Watford.

The home is thoughtfully arranged across approximately 461 sq ft, the home centres around a bright open-plan living area combining kitchen and lounge space for relaxed, sociable everyday living. The double bedroom is generously sized, complemented by a neatly presented bathroom, giving the property a move-in-ready feel.

Residents enjoy beautifully kept communal gardens beside the River Ver, ideal for morning strolls or quiet moments outdoors. With residents' parking, nearby amenities, and excellent road and rail connections, this charming apartment blends convenience with tranquillity, an ideal choice for those seeking a friendly, community-minded lifestyle.

Located less than three miles from St Albans city centre, Park Street offers a comprehensive shopping parade, two well-regarded schools, How Wood station on the Abbey Line, and easy access to the M25, M1, and Radlett Thameslink station.



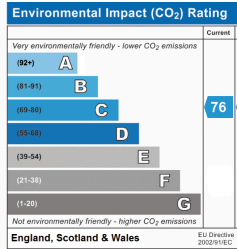
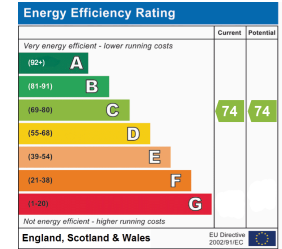


*Neil Hughes*



**TOTAL FLOOR AREA**  
**42.8 sq m (Approx)**  
**461 sq ft. (Approx)**

This floor plan is for illustrative purposes only. It is not drawn to scale. Any measurements, floor areas (including any total floor area), openings and orientations are approximate. No details are guaranteed, they cannot be relied upon for any purpose and do not form any part of any agreement. No liability is taken for any error, omission or misstatement. A party must rely upon its own inspection(s). Powered by www.Propertybox.io



**Tenure Type:** Leasehold  
**Council Tax Band:** B  
**Council Authority:** St Albans

